

YEAR 8 – 12 PROSPECTIVE STUDENT INFORMATION SESSION





OUR SCHOOL

- Excellent 2016 VCE results
- Focus on academic and personal growth
- High expectations
- Support of students through year level and sub school structure
- Wellbeing Program based on Positive Psychology— themes at 7 -10 (e.g. Growth mindset, resilience, empathy, kindness)

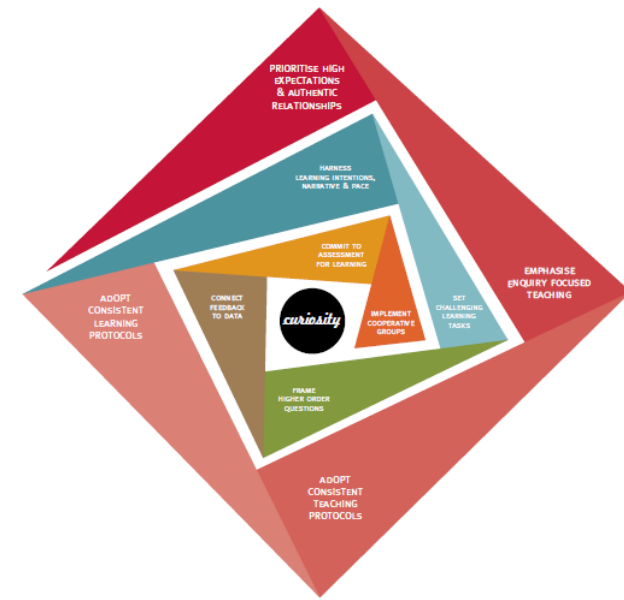


OUR STUDENTS

Students come from

- Diverse cultural backgrounds
- Diverse geographical areas
- At senior level - International Students and Exchange students

PROGRAMS AT MGC



- Wellbeing Program based on Positive Education
- STEAM (Science Technology Engineering Arts Math's)
- Entrepreneurship - Yong Zhao project; creative thinking spaces in the refurbished Library
- Inquiry and Problem Based Learning teaching methods

LEADERSHIP & EXTRA CURRICULAR PROGRAMS

Leadership

- Middle and Senior school executives
- SRC
- Philanthropy

Extra-curricular programs

- Instrumental Music
- Music, Dance & Drama performances
- Book club
- Film Society
- Public Speaking
- Environmental Team
- Air Force Cadets



SPORTING ACTIVITIES

- Rowing
- Aerobics
- Interschool sporting teams





SUPPORTS/NETWORKS

- City Edge Schools
- Alliance of Girls' Schools
- The University of Melbourne
- Inner Melbourne VET cluster
- Local Industry, Business and Community Groups
- Strong Alumni

WE ARE A BYOD SCHOOL

- Each student should have their own device.
- We do not dictate a device.



PARENT PORTAL

Through this program you can:

- Give approval for absences
- Access learning tasks
- Email teachers
- Book Parent Teacher Student Conferences
- Access curriculum materials
- Access progress reports and end of semester reports

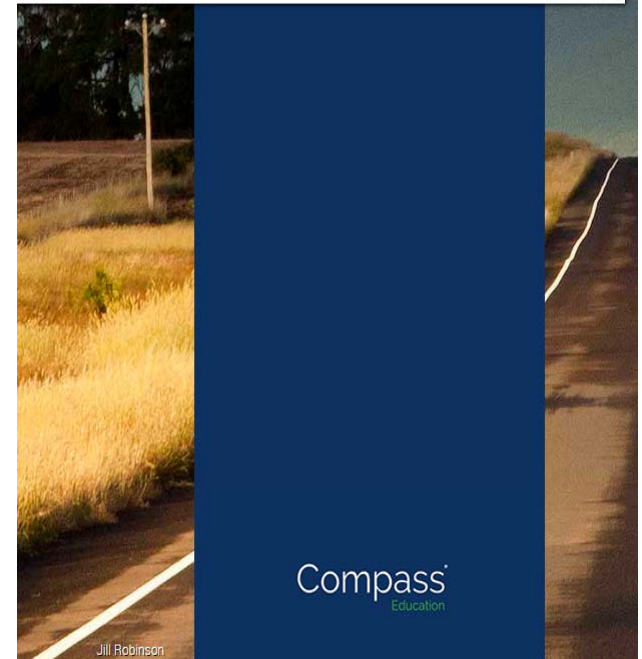


Melbourne Girls' College

Sign in

Remember me

[Can't access your account?](#)



HIGH EXPECTATIONS

Subject	Class	Form	Run	In Class				Out of Class				Percentages			
				Prsnt	Late Appr	Late Un'd	Total	NP Schl	NP Parnt	NP Un'd	Total	Class %	Ac'td %	VCE %	Schl %
9 Fashion Design	9FDA	9C1	39	36	0	0	36	1	2	0	3	92	100	95	95
9 Forensic Science	9FSB	9C1	37	31	1	0	32	1	4	0	5	86	100	89	89
9 French A	9FRAC	9C1	40	30	5	0	35	1	4	0	5	88	100	90	90
9 Health and Educati	9HEPEH	9C1	7	6	1	0	7	0	0	0	0	100	100	100	100
9 Health and Physica	9HEH	9C1	17	16	0	0	16	1	0	0	1	94	100	100	100
9 Mathematics	9MAH	9C1	56	49	2	0	51	2	3	0	5	91	100	95	95
9 Outdoor Education	9OED	9C1	8	8	0	0	8	0	0	0	0	100	100	100	100
9 Photography	9PHOC	9C1	7	7	0	0	7	0	0	0	0	100	100	100	100
9 Physical Education	9PEH	9C1	14	13	0	0	13	0	1	0	1	93	100	93	93
9 Science	9SCIH	9C1	55	45	4	1	50	1	4	0	5	91	100	93	93
9 Visual Art	9VAC	9C1	8	8	0	0	8	0	0	0	0	100	100	100	100
9 World of Ideas	9WOIH	9C1	84	75	1	0	76	1	7	0	8	90	100	92	92
Events	-	9C1	8	6	1	0	7	0	1	0	1	88	100	88	88

EXCELLENT WORK HABITS

9 Creating Global FI (9CGFB) Lenore TWIST	Excellent ▼	Excellent ▼	Excellent ▼	Excellent ▼
9 Health and Physica (9HEPEC) Leigh HANLEY	Excellent ▼	Excellent ▼	Excellent ▼	Excellent ▼
9 Isms (9ISMA) Terence DONNELLY	Excellent ▼	Excellent ▼	Excellent ▼	Excellent ▼
9 Mathematics (9MAC) Susanna CASTELLO	Very Good ▼	Excellent ▼	Excellent ▼	Excellent ▼
9 Science (9SCIC) Tricia KENNEDY	Excellent ▼	Excellent ▼	Excellent ▼	Excellent ▼
9 Textile Design (9TDA) Carol BUSETTI	Excellent ▼	Excellent ▼	Excellent ▼	Excellent ▼
9 World of Ideas (9WOIC) Andrew DOYLE	Excellent ▼	Excellent ▼	Excellent ▼	Excellent ▼

MGC YEAR 8 PROGRAM

Year 8	Mathematics <i>(6x75 min)</i>	English/Humanities <i>(8x75 min)</i>	Dance <i>(2x75 min)</i>	Music <i>(2x75 min)</i>	Science <i>(4x75 min)</i>	LOTE (French or Chinese) <i>(8x75 min)</i>	Food Technology <i>(3x75 min)</i>	PE <i>(2x75 min)</i>	Sport <i>(2x75 min)</i>	Health <i>(1x75 min)</i>	Wellbeing <i>(2x75 min)</i>
			Art <i>(4x75 min)</i>								

LANGUAGES

- Begin at Year 8
- French or Chinese
- Intensive year long study

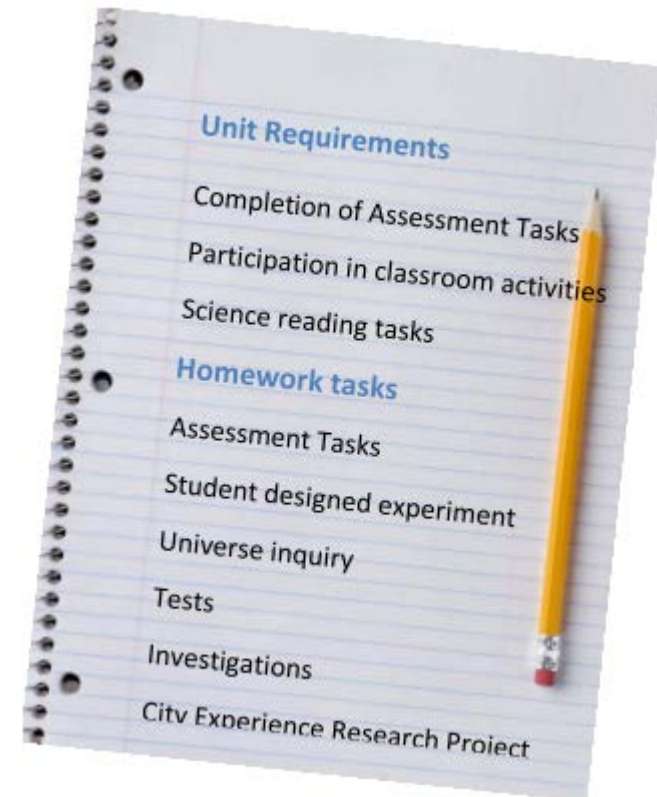


MGC YEAR 9 PROGRAM

Year 9	Mathematics (6x 75 min)	Science (6x75 min)	World of Ideas (<i>English & Humanities</i>) (8x75 Min)	Elective 1 (5x75 min)	Elective 2 (5x75 min)	Elective 3 (5x75 min)	PE (2 x 75min)	Health (2 x 75min)	Wellbeing (1x75)
				Elective 4 (5x75 min)	Elective 5 (5x75 min)	Elective 6 (5x75 min)			


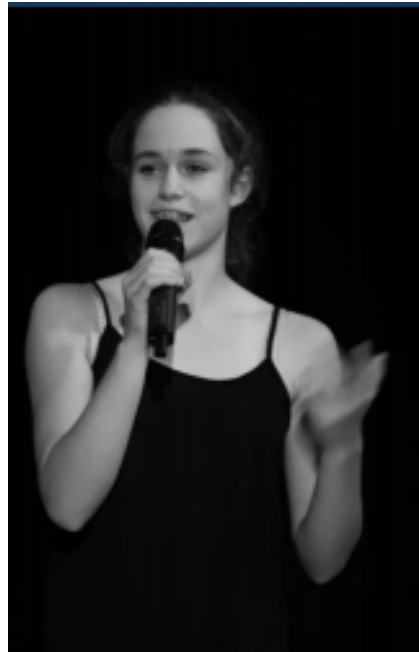
YEAR 9 CITY EXPERIENCE

- 8 days based in city
- Project based team work
- Final presentation evening with families



WORLD OF IDEAS

- Integrated subject – English and Humanities
- Inquiry based learning
- Comedy unit



Work Requirements
Participation in class activities
Leading and participating in class discussions
Reading assignments
English skills development tasks

Assessment Tasks
Comedy Folio, performance and script
Text studies
Essays - Literary and Historical
A folio of personal writing
Inquiry project
City Experience Project

SENIOR SCHOOL

- Changing schools in the Senior Years can present some challenges to individuals but can also be rewarding.
- Our students are very open to accepting new students.
- There are a variety of co-curricular programs that enable students to mix with a wide range of students.



MGC YEAR 10 PROGRAM

- **English electives & core** (Literary Classics, Talking Back, True Stories, English Language, Dangerous Women, Horror)
- **Maths:** Advanced, Mainstream and General
- **Science:** Biology, Physics, Chemistry and Environmental Science
- **4 elective choices** per semester
- **Languages** in French and Chinese Second Language

Year 10	English Electives (6x75 min)	General Maths / Mainstream Maths / Advanced Maths (6x75 min)	VCE UNIT 1&2 SUBJECT (6x75 min)	Science Elective (6x75 min)	Elective 1 (6x75 min)	Elective 2 (6x75 min)	Wellbeing Careers (4x75 min)
	English (6x75 min)			Elective 3 (6x75 min)	Elective 4 (6x75 min)	Elective 5 (6x75 min)	

VCE ADVANCEMENT FOR YEAR 10 STUDENTS

Aim is to provide opportunities for students to

- Maximise learning experiences
- Excel in an area of interest

Pre-requisites

- High attendance rate
- Demonstrated commitment to study
- Well developed time management skills

VCE

We offer a diverse range of VCE and VET subjects which can be viewed in the Senior School handbook.



CAREERS

We have a careers advisor who can help with all career based information

- Year 10:
 - Careers Fast track program
 - Work Experience (last week of term 4)
- Year 11 and 12
 - Comprehensive careers and course counselling program



SUPPORT FOR OUR STUDENTS:

- Student services staff
- Year Level Leader and Assistant Leader
- Wellbeing teacher
- Classroom teacher
- Careers Advisor



HOW DO I APPLY FOR MGC

What to do next?

- Complete the enrolment enquiry and additional information forms
- Read the handbook and select your subjects.
- Attach your most recent reports.
- Due date – Monday August 28
- If you think we are your local school please check the designated boundary map on our website

THANK YOU FOR COMING

